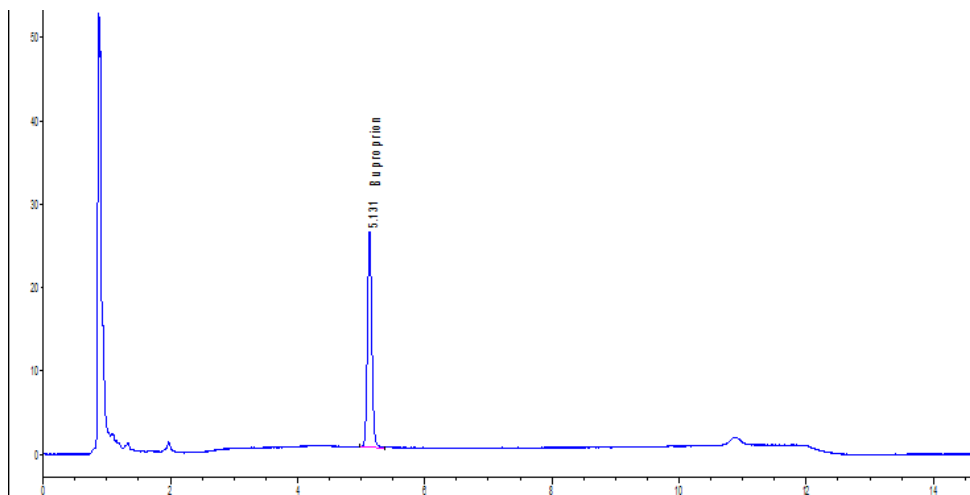
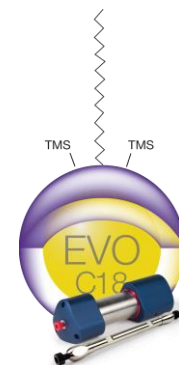
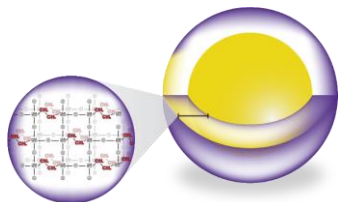


Bupropion Extracted From Urine



Cartridge: Strata-X-CW
Size: 60 mg/3 mL
Part No.: 8B-S035-UBJ
Pretreatment: 1:1 Urine: 100 mM Sodium Phosphate pH 6.8 (1 mL total sample load); 50 μ L of 1 mg/mL drug in to 1 mL of diluted urine
Condition: Methanol
Equilibrate: Water
Load: Sample
Wash: 100 mM Sodium Phosphate (pH 6.8)
Elute: 5 % Formic Acid in Acetonitrile
Reconstitute: 50:50 5mM Ammonium Bicarbonate pH 9.0 : Methanol (500 μ L)

Column: Kinetex 5 μ m EVO C18
Dimension: 150 x 4.6 mm
Part No.: 00F-4633-E0
Mobile Phase: A: 5 mM Ammonium Bicarbonate (pH 9.0)
B: Methanol
Gradient: 50 % to 80 % B over 10 minutes
Flow Rate: 1 mL/min
Temperature: 22 °C
Detection: UV @ 254
Sample: 1. Bupropion



More Kinetex EVO at: www.phenomenex.com/KinetexEVO