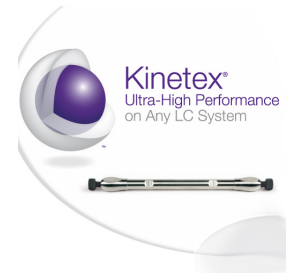


TCAs at neutral pH Kinetex 5u EVO C18 150x4.6mm

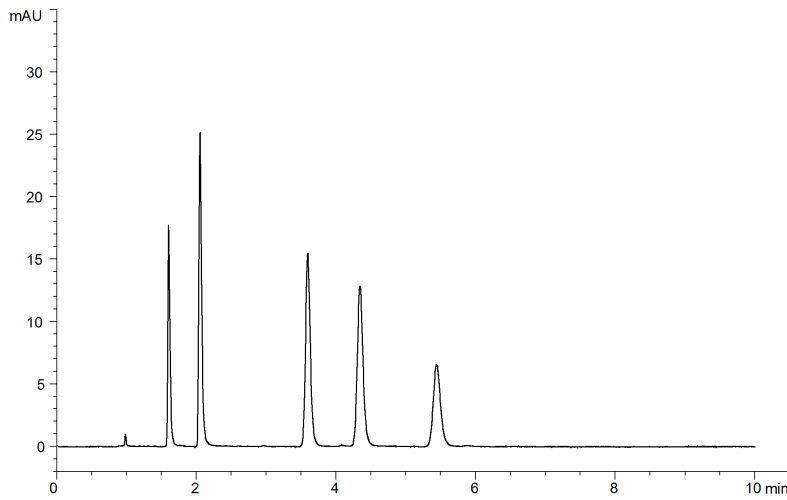
Column: Kinetex™ 5µm EVO C18 100 Å, LC Column 150 x 4.6 mm, Ea
Dimensions: 150 x 4.6 mm ID
Order No: 00F-4633-E0
Elution Type: Isocratic
Eluent A: 20mM Sodium phosphate pH 7
Eluent B: Acetonitrile/Methanol 50/50
Gradient
Profile:

Step No.	Time (min)	Pct A	Pct B
1	0	30	70

Flow Rate: 1.25 mL/min
Col. Temp.: 30 °C
Detection: UV-Vis Abs.-Variable Wave.(UV) @ 254 nm (ambient)
22779



Products used in this application:



ANALYTES:

- 1 Protriptyline
- 2 Nortriptyline
- 3 Imipramine
- 4 Amitriptyline
- 5 Clomipramine

