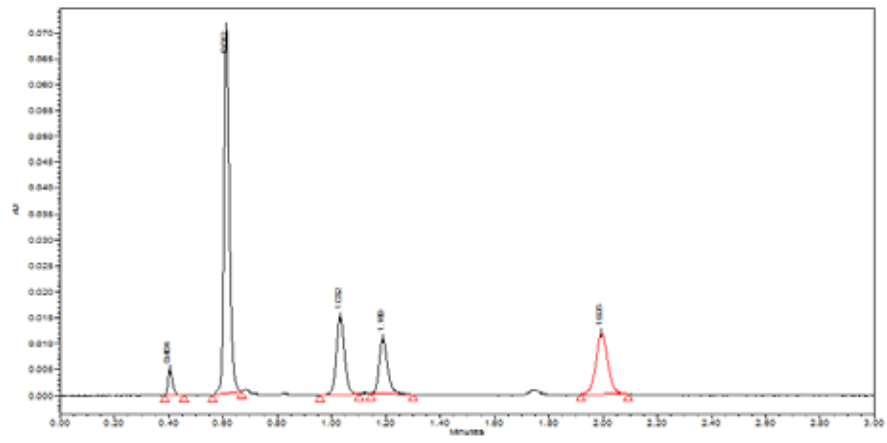


Nucleotides

Luna Omega 1.6 µm Polar C18 | Application ID: 23585



Column: Luna Omega 1.6 µm Polar C18
Dimension: 50 x 2.1 mm
Part No.: 00B-4748-AN
Mobile Phase: 20 mM Ammonium Formate pH 3.0
Flow Rate: 0.4 mL/min
Temperature: 22 °C
Detection: UV @ 285 nm
Sample: 1. Thiourea
2. 5-Flurocystine
3. Guanosine-5-Monophosphate
4. Adenine
5. Thymine