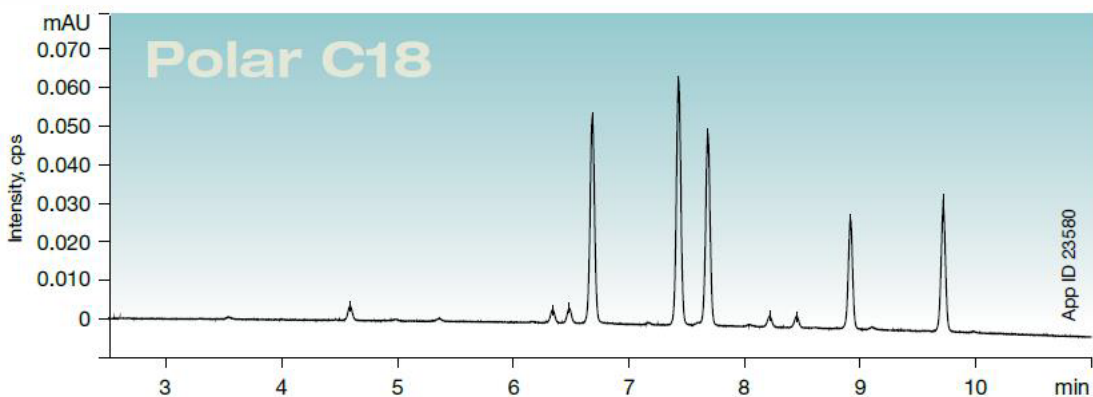


Natural Cannabinoids

Luna Omega 1.6 µm Polar C18

| Application ID: 23580



Column: Luna Omega 1.6 µm Polar C18
 Dimension: 100 x 2.1 mm
 Part No.: 00D-4748-AN
 Mobile Phase: A: 20 mM Ammonium Formate pH 3.2
 B: Acetonitrile

| Gradient: | Time (min) | % B |
|-----------|------------|-----|
| | 0 | 60 |
| | 12 | 95 |
| | 13 | 95 |
| | 13.01 | 60 |
| | 15 | 60 |

Flow Rate: 0.4 mL/min
 Temperature: 40 °C
 Detection: UV @ 256 nm
 Sample: 1. CBVD

2. Cannabidiol
3. CBG
4. Cannabidolic Acid
5. CBG-A
6. Cannabinol
7. Delta 9 THC
8. Delta 8 THC
9. CBC
10. THCA-A