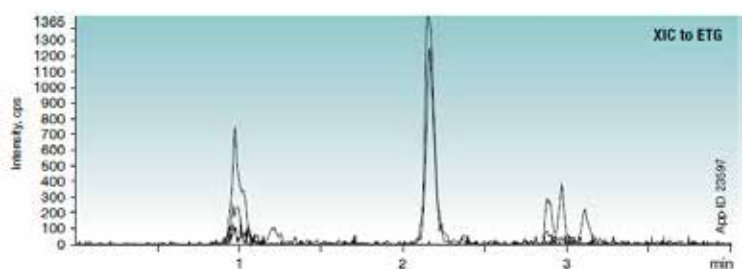
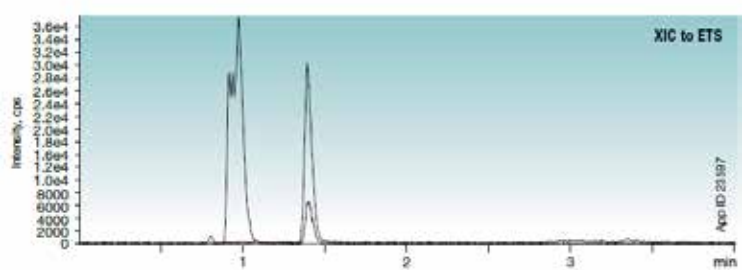
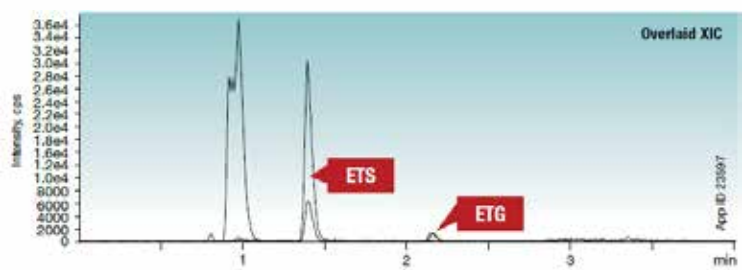




# ETG and ETS from Urine Sample

Luna Omega 1.6 µm Polar C18 | Application ID: 23597



Column: Luna Omega 1.6 µm Polar C18  
Dimension: 100 x 2.1 mm  
Part No.: 00D-4748-AN  
Mobile Phase: A: 10 mM Ammonium formate with 0.1 % Formic acid  
B: Acetonitrile with 0.1 % Formic acid

Gradient	Time (min)	% B
	0	0
	1	0
	1.1	50
	5	0

Flow Rate: 0.3 mL/min  
Temperature: 25 °C  
Detection: MS/MS  
Sample: 1. Urine interference  
2. Ethyl Sulfate (ETS)  
3. Ethyl Glucuronide (ETG)